

# Group programme 2026

Experience nature in the Danube floodplains

Nationalpark  
**Donau Auen**

FREIER FLUSS.  
WILDER WALD.

Supported by the federal province and the European Union



**WIR leben Land**  
Common Agricultural Policy Austria

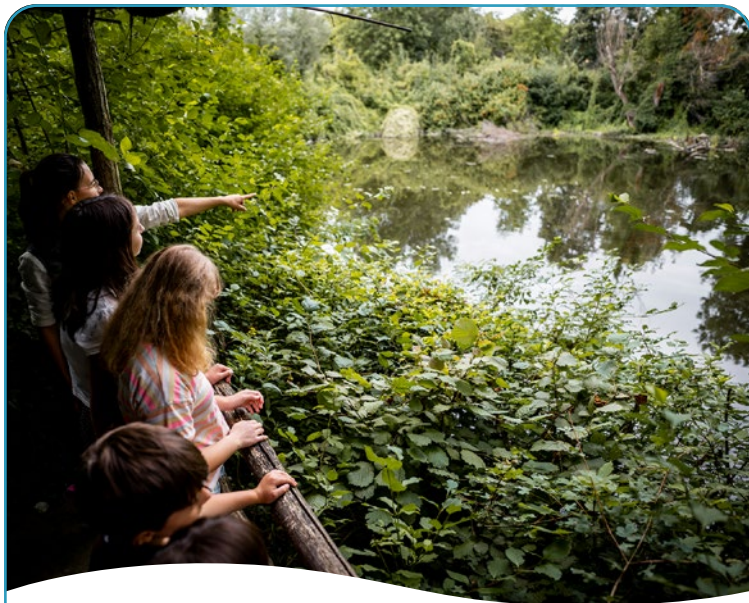


Co-Funded by the  
European Union





## Programmes at the Schloss Orth National Park Centre



### Guided tour on the Schlossinsel at the Schloss Orth National Park Centre

The outdoor experience area "Schlossinsel" will introduce you to the fauna and flora of the National Park region. Learn more about the European pond turtle and our native snake species on a tour with National Park Rangers. Observe fish under water – while staying entirely dry yourself. Learn more about the plants growing in the floodplain forests.

📍 Orth an der Donau, Schloss Orth National Park Centre

🕒 approx. 1.5 hours

👥 Minimum 15 persons

💶 € 11.50 per person



## The Danube floodplains are best explored on board! Our boat tours frame your nature experience:



### Tschaika boat trip and walk through the Riparian Forest

The Tschaika is a genuine reproduction of a historical ship that used to sail along the Danube. Experience the power of the free-flowing river on a leisurely Danube cruise while learning more about the natural landscape of the National Park. Afterwards, you will spend some time walking through the lush riparian forest. National Park Rangers will share exciting facts on biodiversity and nature conservation of the region.

📍 Orth an der Donau, restaurant Humer's Uferhaus parking lot

👥 Minimum 13 persons

💶 € 38.00 per person

🕒 approx. 3 hours

**Advice:** For an additional fee, bread and wine can be requested to be served on board.



### Combined tour at the Schloss Orth National Park Centre: guided tour through the National Park exhibitions and a visit of the Schlossinsel

Several multimedia expositions are waiting for you here – the National Park Lounge, the new National Park exhibition, and changing themes in the observation tower. You will be accompanied by National Park Rangers. Subsequently, you can explore the Schlossinsel area with its animal inhabitants.

📍 Orth an der Donau, Schloss Orth National Park Centre

👥 Minimum 15 persons

💶 € 16.00 per person

🕒 approx. 3 hours

**Advice:** Find further interesting group packages at the unique Marchfeld castles at [www.schloesserreich.at](http://www.schloesserreich.at).



### Rubber dhringy tour and walk in Orth an der Donau

Explore a side branch of the Danube together with National Park Rangers. Discover evidence of beaver territories and learn more about the tracks of animals living on the riverbanks, where you may even catch a glimpse of Kingfishers, Herons, or Red deer.

After the boat trip, the walk leads you through the floodplain forest. Here you can experience that deadwood is full of life. Find exciting plant strategies and discover how floods leave their marks on riparian landscapes.

📍 Orth an der Donau, restaurant Humer's Uferhaus parking lot

🕒 approx. 3 hours

👥 Minimum 6 persons

💶 € 275.00 per boat (capacity: 10 guests per boat)

📍 Availability depends on water level.

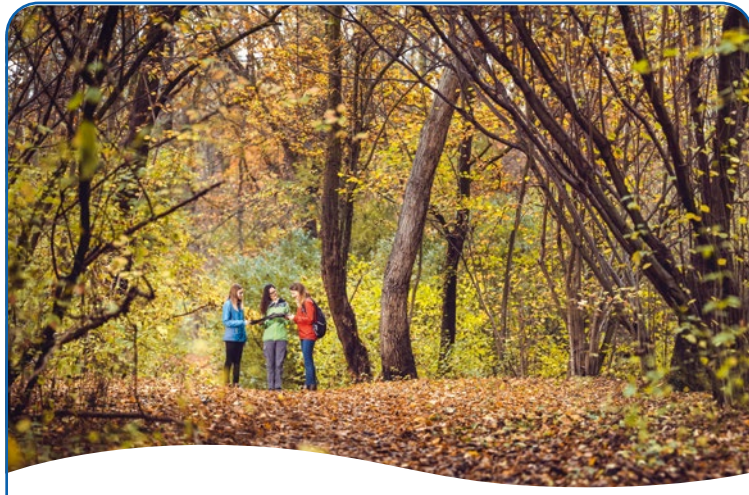




### Rubber dhingy tour from Stopfenreuth to Hainburg

We offer a number of options for exploring the fascinating floodplains, with various boat trips depending on water level, in the Stopfenreuth – Hainburg area. One option is crossing both side branches connected to the Danube. The free-flowing Danube always forms an essential part of these excursions. The National Park Rangers introduce you to the many special features this section of the Danube has to offer. This tour requires your own bus transport.

- 📍 Stopfenreuth, Uferstraße 1 (at the flood protection dam)
- 🕒 2.5 – 3.5 hours (depending on water level)
- 👤 at least 12, max. 30 persons, minimum age of 8 years, min. 6 adults and max. 4 children per boat
- 💶 € 350.00 per boat (capacity: 10 guests per boat, at least 2 boats)



### “River – peaks – floodplain forest” – combination tour Hainburg

The group meets at Hainburg Harbour, where the National Park Rangers give a short introduction into proper paddling. The boat trip downstream the Danube in dhingies will include plenty of information on the National Park and its river revitalization.

One of the highlights is the meeting of the lowland river Morava and the mountain river Danube at the mouth of the Morava, accompanied by the view of the Devin castle ruins in Slovakia. The hike back to the starting point in Hainburg takes you through lush greenery, passing by the Rötelsstein ruins and walking upstream along the banks of the Danube. River, mountain, and floodplain forest: a unique combination.

Starting point can be reached by public transport:  
Express railway S7, stop: Hainburg/passenger station

- 📍 Hainburg, parking lot at the Donaulände
- 🕒 approx. 4 hours
- 👤 at least 6 persons, minimum age of 8 years, min. 6 adults and max. 4 children per boat
- 💶 € 321.00 per boat (capacity: 10 guests per boat)



### Rubber dhingy tour from Schönauf to Orth an der Donau

Travelling downstream together – past steep slopes, gravel banks, and riparian islands. Rest on the river banks, learn more about the diversity of the flora and fauna in the National Park and keep an eye out for rare bird species. A truly unique experience.

National Park Rangers welcome your group in Orth an der Donau and accompany you to Schönauf by bus. A brief introduction to paddling is followed by a boat trip on a side branch. Excitement grows when the boat paddles into the free-flowing section of the Danube and starts quickly drifting downstream. Eventually the group returns to the starting point in Orth an der Donau.

This tour requires your own bus transport.

- 📍 Orth an der Donau, restaurant Humer's Uferhaus parking lot
- 🕒 approx. 3 hours
- 👤 at least 6 persons, minimum age of 8 years, min. 6 adults and max. 4 children per boat
- 💶 € 274.00 per boat (capacity: 10 guests per boat)

## Your personal National Park Ranger



### Themed walks in the Lower Austrian part of the National Park

You can also experience the dynamics of the floodplain landscape and the power of the river from the bank. A vast variety of themes covering anything from habitats to ecology or animal and plant species, turn every hike into an educational experience. Choose the date, meeting point, and, if desired, the focus theme for your National Park hike.

- 📍 Meeting point by arrangement
- 🕒 3 to 3.5 hours
- 💶 flat-rate € 210.00 (for up to 20 persons)





**Booking, information and advice**



**30 Years**  
Donau-Auen  
National Park

The river landscape between Vienna and Bratislava has been subject to special protection as the Donau-Auen National Park since 1996. The Danube forms a varied mosaic of habitats that offers a home to a plethora of flora and fauna that can be explored by you. Visit pristine floodplain forests, meadows, the free-flowing river and enchanting side branches. Get fascinating background information and discover places of great beauty along the way accompanied by our National Park Rangers. We are looking forward to your visit.

**For programmes in the Lower Austria part of the National Park:**

**Schloss Orth National Park Centre**

Schlossplatz 1, 2304 Orth an der Donau, Austria

**21 March to 1 November:** daily, 9 AM – 5 PM

**2 November to 20 March:** Winter break,

Call us Mon to Fri, 9 AM – 1 PM

[schlossorth@donauauen.at](mailto:schlossorth@donauauen.at), [www.donauauen.at](http://www.donauauen.at)

**National Park information point Schloss Eckartsau**

Schloss Eckartsau, 2305 Eckartsau, Austria

**1 April to 1 November:**

Mon to Fri, 10 AM – 5 PM; Sat, Sun, holidays 10 AM – 6 PM

**2 November to 31 March:** Winter break,

Call us Mon to Fri, 10 AM – 4 PM

[infostelle.donauauen@bundesforste.at](mailto:infostelle.donauauen@bundesforste.at)

[www.schlosseckartsau.at](http://www.schlosseckartsau.at)

**For programmes in the Viennese part of the National Park:**

**National Park House wien-lobAU**

Dechantweg 8, 1220 Vienna, Austria

**Beginning of March to end of October:**

Wed to Sun, 10 AM – 6 PM

[nh@ma49.wien.gv.at](mailto:nh@ma49.wien.gv.at), [www.nph-lobau.wien.at](http://www.nph-lobau.wien.at)

**The prices apply from 1 January 2026 onwards;  
all quoted prices include VAT.**

Tour guides and bus drivers may visit the Schloss Orth National Park Centre for free. Bus parking is available nearby.

We will gladly inform you about the special terms for tour operators. Please book your tour no later than 7 days before the desired date. Tours are available in German, English or Slovakian; other languages can be organised upon request.

Our programmes are aligned with spending the entire day in the Donau-Auen National Park. We will gladly advise you on what offers can be combined.

**Accessibility:** Schloss Orth National Park Centre is largely wheelchair accessible. The Schlossinsel area has special information elements for blind and visually impaired guests.

Please note that the Shipping Law allows exclusion of people who are under the influence of alcohol or who otherwise appear mentally or physically unsuitable for participating in our boat tours. For details, see our GTC.

Dogs must not be taken along on boat trips. The Schloss Orth National Park Centre does not allow dogs either.

If a booked tour cannot be held as planned, e.g., due to flooding events, poor weather conditions, storm, or exceptionally high mosquito occurrence, we will strive to offer interesting alternatives. Liability for injury and property damage cannot be taken.

**You can also find all  
group offers online**



[www.donauauen.at](http://www.donauauen.at)

 [donauauen](https://www.facebook.com/donauauen)  [np\\_donau\\_auen](https://www.instagram.com/np_donau_auen)  [@donauauen](https://twitter.com/donauauen)



 Bundesministerium  
Land- und Forstwirtschaft,  
Klima- und Umweltschutz,  
Regionen und Wasserwirtschaft

